

Product description

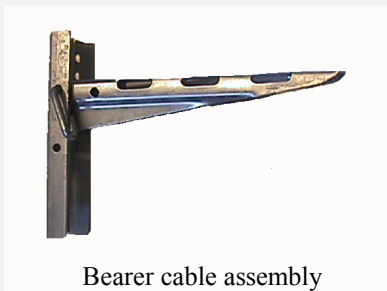
Manhole Fittings



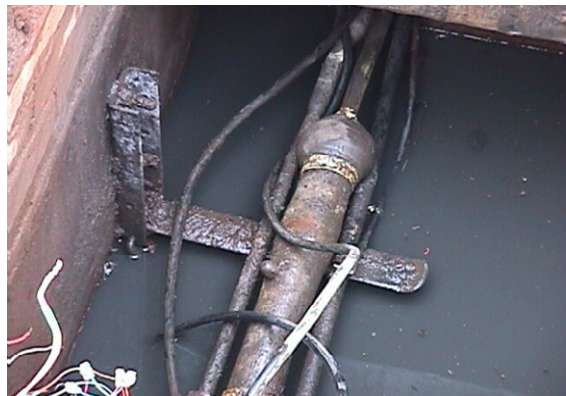
Proven designs in durable materials fully approved by major telecom companies within the UK and around the world.

All the items shown in this section are manufactured from steel hot dipped galvanised to BS729 except where stated.

(All sizes are approximate.)



Bearer cable assembly



Brackets cable bearer

Used to support cables in underground structures.

Order quantity: each

Order codes:

- | | |
|---------------------|----------------------|
| no. 3 (150mm) 01843 | no. 12 (350mm) 01842 |
| no. 5 (170mm) 01841 | no. 18 (500mm) 01848 |
| no. 8 (250mm) 01844 | no. 24 (650mm) 01854 |



Cable bearer wall type

Used in conjunction with brackets cable bearer and pins locking to support cables in underground structures.

Order quantity: each

Order codes:

- | | |
|---------------------|-----------------------|
| no. 1 (178mm) 01833 | no. 8 (1270mm) 01834 |
| no. 2 (279mm) 01832 | no. 10 (1574mm) 01830 |
| no. 3 (508mm) 01831 | no. 12 (1879mm) 01836 |
| no. 5 (813mm) 01835 | |



Product description

Bolts foundation indented

No. 1 used as foundation bolts for cabinets.
No. 2 used for fixing cable bearers in new concrete or brick constructions.

Order quantity: each

Order code:

no. 1	01822
no. 2	01821



Pin locking cable bearer

Used to hold cable bearers in place on wall type brackets.

Order quantity: each

Order code: 01840



Irons anchor no. 4

Set into concrete and used for attaching cable guiding devices in manholes.

Order quantity:

each

Order code: 01801



Ladder steel

with hook and bar
Used for manhole access.

Order quantity: each

Order code:

2.15m	01863
2.3m	01864
3.0m	01864/3



Step manhole

Steps for building into concrete or brick structures.

no. 1 (115mm leg)

no. 2 (230mm leg)

Order quantity:

each

Order code:

no. 1	01815
no. 2	01816



Sump grating 2A

Grating for drainage purposes in underground structures.
Tough plastic manufacture.

Order quantity: each

Order code: 01811

